

Spring
QUARTER

PORTMAN |  **JLL**

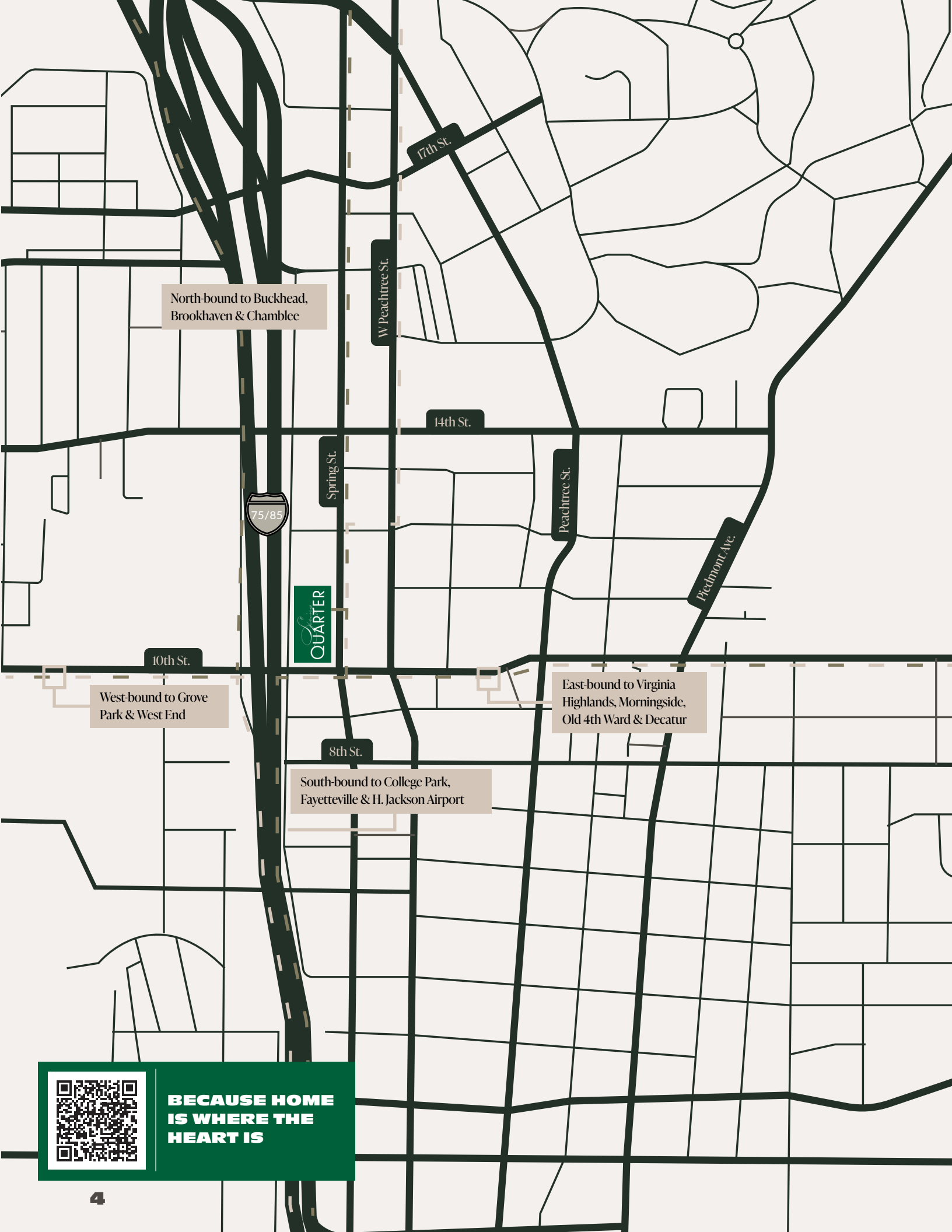
1000 SPRING RESIDENCES

CONTENTS



- 04** **IN THE HEART OF IT ALL**
- 06** **MIDTOWN, ATLANTA**
- 10** **PROJECT DETAILS**
WHERE INSPIRATION SPRINGS
UPSCALE DESIGN
- 14** **RETAIL SPACE**





Midtown has one of the fastest-growing residential populations in the city, with 20,000 residents, and many more on the way. Choices range from homes in traditional neighborhoods, to apartments, lofts and hi-rises with spectacular views of the city - giving you the best of both worlds. Centrally located, Midtown is also within easy striking distance of most major attractions in the City.

And, Midtown is Atlanta's "heart of the arts," featuring the largest concentration of arts and cultural attractions in the Southeast. It also has emerged as a powerful innovation district with substantial anchor institutions including Georgia Tech, Emory University Hospital Midtown, and the Savannah College of Art and Design-Atlanta.

IN THE
HEART
OF IT ALL



**BECAUSE HOME
IS WHERE THE
HEART IS**



RETAIL HIGHLIGHTS

HEYDAY

Cylo lila

Bar Margot
FOUR SEASONS HOTEL
ATLANTA

DINE & DESIGN
EAT. PAINT. DRINK.



ALTA
TORO

DANCING GOATS
COFFEE



HIGH
restaurant • bar
Campagnolo



drybar®



ATLANTA
BOTANICAL
GARDEN



MIDTOWN, ATLANTA

With its riches-to-rags-to-riches history, lively arts scene, and proactive planning and community building, Midtown Atlanta is the preeminent urban neighborhood in Atlanta. It stands out as a dense, mixed-use walkable area in a region traditionally known for its decades of sprawling growth.

No where else but Midtown can you walk to 150+ restaurants, 300+ acres of parks and greenspace, world class arts and attractions, shopping, events and festivals, and much more.

BIG CITY LIFE NEIGHBORHOOD FEEL

150+
RESTAURANTS

300+
ACRES OF PARKS

15+
BARS / PUBS

25
HOTELS

115+
ARTS AND
ATTRACTIONS



WORLD OF COCA-COLA

GEORGIA AQUARIUM

COLLEGE FOOTBALL HALL OF FAME

COCA-COLA HEADQUARTERS

THE PAINTED DUCK

THE INTERLOCK

BANK OF AMERICA

BOBBY DODD STADIUM

GEORGIA INSTITUTE OF TECHNOLOGY

TECH SQAURE

NCR

THE VORTEX BAR AND GRILL

TURNER ENTERTAINMENT NETWORKS

MIDTOWN MARTA

THE CONSULATE

FEDERAL RESERVE BANK OF ATLANTA

ADULT SWIM STUDIOS

BULLA GASTRO BAR

GOOGLE

EPICUREAN HOTEL

REGIONS PLAZA

MICROSOFT

ATLANTIC STATION

PIEDMONT PARK

ARTS CENTER MARTA

WOODRUFF ARTS CENTER

HIGH MUSEUM OF ART ATLANTA

I-75 / I-85



WHERE INSPIRATION SPRINGS

At the heart of the project is the remaining of the Historic Patterson Funeral Home and Gardens, designed by Philip T. Schultze in 1928.

This timeless treasure will see new life emerge, bringing a new retail destination to Midtown.



24,000 SF of Retail Space

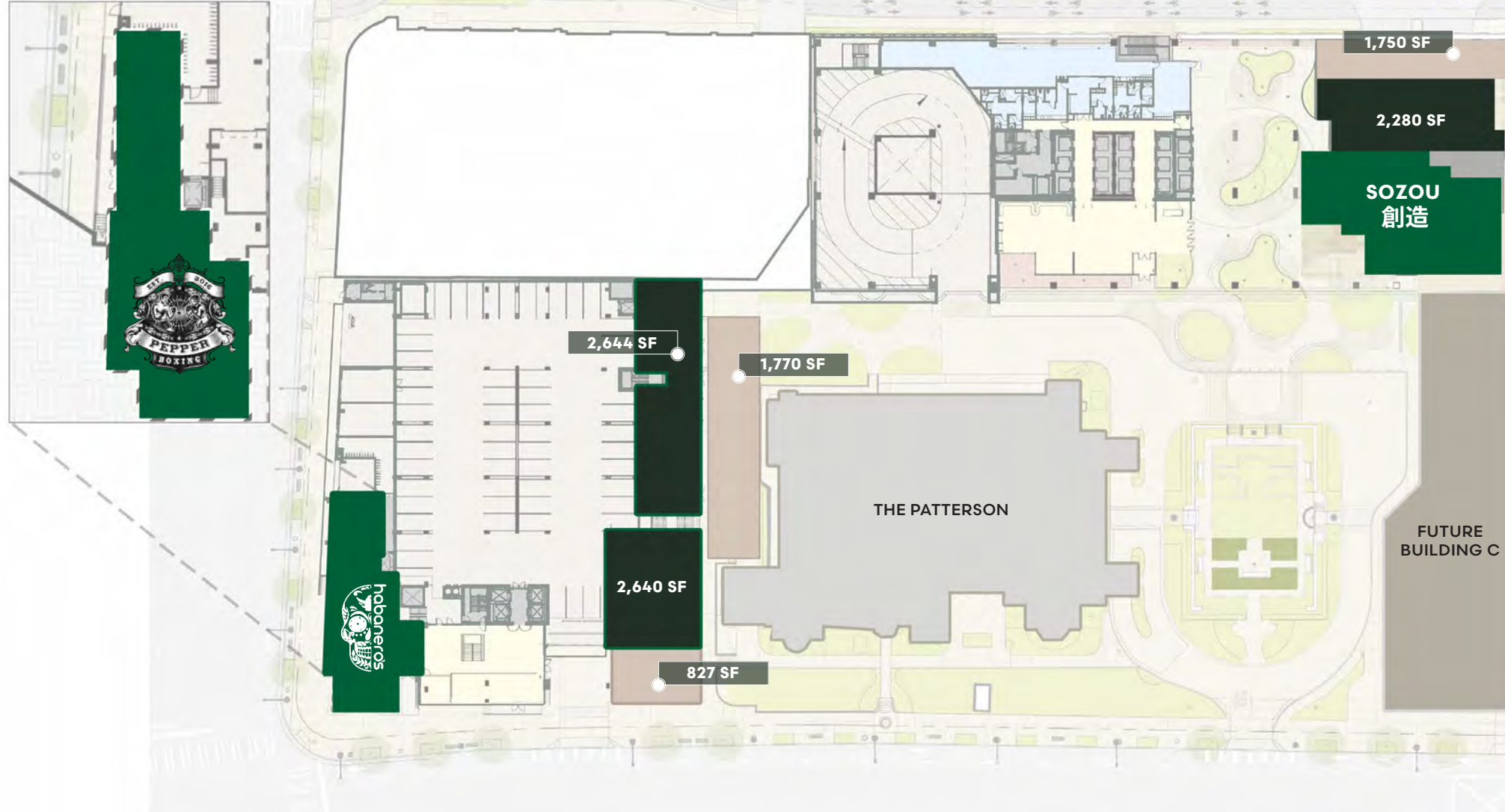


UPSCALE DESIGN



RETAIL SPACE

FLOOR 1.5



- AVAILABLE RETAIL SPACE
 - LEASED RETAIL SPACE
- AVAILABLE PATIO SPACE
 - THE PATTERSON
- FUTURE BUILDING SPACE



2,640 SF of Retail Space

SOURCE OF SURPRISES

The source of unexpected flavors, captivating conversation, thrilling evenings, and enchanting moments. Unlock the world that awaits.

OVERFLOWING WITH LIFE



RESIDENTIAL

OFFICE

RETAIL

CAMPUS
4.1 ACRES

CLASS A OFFICE
525K SF

RESIDENTIAL
370 UNITS

TENANT EXCLUSIVE AMENITIES
20K SF

HISTORIC, GARDENS AND RETAIL
40K+ SF

PARKING (CAMPUS)
1.2K SPACES



Spring
QUARTER

Dotan Zuckerman

dzuckerman@portmanholdings.com

404 790 1234

Allie Spangler

allie.spangler@jll.com

404 729 6994

Molly Morgan

molly.morgan@jll.com

404 805 3557